



BIRCH
CREATIVE



WILD BLOOM CUSHION
LIBERTY.
FABRICS





WILD BLOOM CUSHION

CUSHION SIZE: 18" x 18" (45 x 45cm)

MATERIALS:

- LIBERTY Fabrics - The Emporium Collection



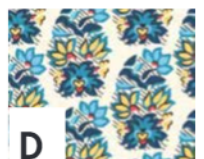
REGENT ROSE-5905B
Cut 8 x 4 3/8" squares



WILD BLOOM -5901B
Cut 2 x 7 3/8" squares
Cut 1 x 6 1/2" square
Cut 2 strips 2 1/2" x WOF for binding



OSAKA BLOSSOM
Cut 4 x 4 3/8" squares
Cut 2 pieces for backing -
16" x 19" and 6" x 19"



PALMERIA-5908B
Cut 4 x 4 3/8" squares



KYOTO POSEY-5907B
Cut 2 x 7 3/8" squares

- backing fabric - 1 mtr
- Bosal Light Fusible Batting
- 18" cushion insert
- zip 25cm



The cushion is made up of simple Half Square Triangle blocks.

The size of the cushion can be adjusted easily by changing size of the blocks.

The fabric requirements is for making cushion as shown in the photograph. Before cutting review the placement of colours in case you want to make you own choices.



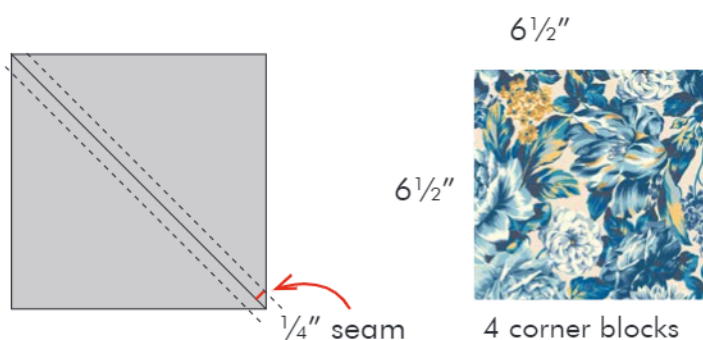
HALF SQUARE TRIANGLE BLOCK

Cut 7 3/8" squares from fabric B and fabric E. Group them together in pairs.

Position the two squares together with right sides facing, lining up the edges. Draw diagonal line from corner to corner on the wrong side

Use your sewing machine to sew a 1/4" seam on either side of the line.

Cut along the line. Gently press the seam open and trim the newly-sewn square to 6 1/2" square shape. Total 4 blocks for this fabric combination..



BIRCH

CREATIVE

WILD BLOOM CUSHION

Make smaller Half Square Triangle blocks using 4 3/8" squares in the same manner.

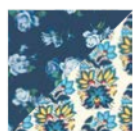
To make quilt as illustrated you will need to make following combinations:



4 blocks - 6 1/2" squares

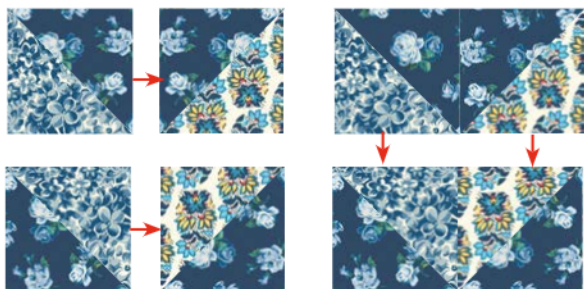


8 blocks - 3 1/2" squares

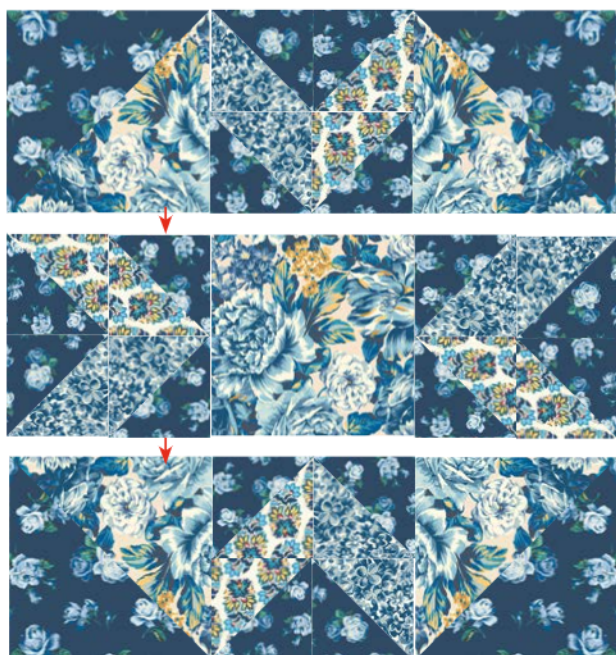


8 blocks - 3 1/2" squares

Join 3 1/2" squares into 4 blocks.



Refer to illustration and lay your blocks in rows. Sew blocks in each horizontal row together. Press seam allowances. Sew rows together, taking care to align the seams.



CUSHION ASSEMBLY

Cut Bosal Light Fusible Batting to the size of the pillow top. Iron batting and pillow top together and quilt as desired.

After you finished, trim excess of any fabric or batting, squaring the cushion.

BACKING

Place the two backing pieces right sides together and pin. Lay the zipper on top and mark just inside both edges with a vertical pin.

Start using a standard stitch length. Sew from the edge to the first vertical pin. Backstitch and then change the stitch length to the longest basting stitch. Sew to the next vertical pin. Change back to standard stitch length and backstitch again.

Sew the to other edge. Press open the seam. Place the zipper right side down into the seam. Stitch zip in place using the zipper foot. Unpick basting stitch.

BINDING

Sew 2 1/2" binding strips together end-to-end using diagonal seams. Open seams and press the long binding piece in half with right sides facing out. Place cushion front and cushion back together with wrong side facing. Stitch binding in place.

